



Model: Solatube SkyVault Series (29 in./740 mm Daylighting System)

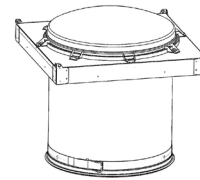
Project: _____ Location: _____ Type: _____

Product Specifications Appear in CSI Division 08, Section 08 62 23. For budgeting and quotations use only. Qty: _____

Model		Capture Zone				Transfer Zone		Delivery Zone						
<u>S</u>	<u>M</u>	<u>7</u>	<u>4</u>	<u>D</u>	<u>S</u>	-	<u>0</u>	-						
1		2	3	3a	4	5		5a	6	7	8			

1 Model

Solatube® M74 DS Solatube M74 DS (29 in./740 mm Daylighting System)
Open Ceiling



Capture Zone

2 Collector

C Collector with Raybender HD and LightTracker Technologies
Leave blank if not desired.



3 Domes

DP Polycarbonate Dome
DPP Polycarbonate Outer Dome + PETG Inner Dome



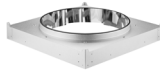
3a Dome Options (Leave blank if not desired)

SG Security Guard*
*Factory Installed



4 Flashings

FC Curb Cap
(Curb by Others)

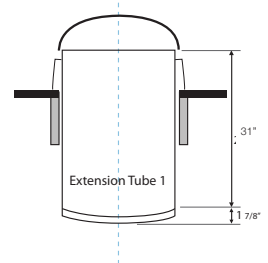


Transfer Zone

5 Extension Tubes Required*

Run measured from top of flashing to diffuser along centerline of tubing using 24" lengths. See 4a for optional 48" length.

- | | | | |
|-----------|---------------------------------------|------------|---|
| E1 | One Extension Tube – Max Run = 28" | E7 | Seven Extension Tubes – Max Run = 172" |
| E2 | Two Extension Tubes – Max Run = 52" | E8 | Eight Extension Tubes – Max Run = 209" |
| E3 | Three Extension Tubes – Max Run = 76" | E9 | Nine Extension Tubes – Max Run = 233" |
| E4 | Four Extension Tubes – Max Run = 100" | E10 | Ten Extension Tubes – Max Run = 257" |
| E5 | Five Extension Tubes – Max Run = 124" | EXX | Total Run Length to be Determined by Bidding Contractor |
| E6 | Six Extension Tubes – Max Run = 148" | | |



5a Extension Tube Options (Leave blank if not desired)

*At least one 24" or 48" extension tube required for diffuser

- EL** Optional 48" Extension Tube (Substitute one 48" for two 24" above)

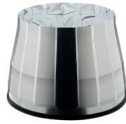
Delivery Zone

6 Bottom Assembly

- B** Base Unit



- A** Amplifier*



*The Amplifier mounts to the bottom extension tube, adding an additional 23.7" to the overall tube run.

7 Diffuser Lens

- L2** Prismatic Diffuser



8 Measurement Standard

- M** Metric **I** Imperial

Example

SM74DS-O-DPP-FC-E2-B-L2-M

Solatube® SkyVault Series M74DS-O (29 in./740 mm Daylighting System), Polycarbonate Outer Dome + PETG Inner Dome, Two Extension Tubes, Base Unit and Prismatic® Diffuser. For metric installations.