



# Model: Solatube SkyVault Series (29 in./740 mm Daylighting System)

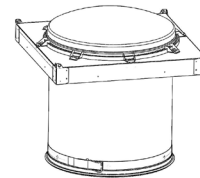
Project: \_\_\_\_\_ Location: \_\_\_\_\_ Type: \_\_\_\_\_

Product Specifications Appear in CSI Division 08, Section 08 62 23. For budgeting and quotations use only. Qty: \_\_\_\_\_

Model		Capture Zone			Transfer Zone		Delivery Zone							
<u>S</u>	<u>M</u>	<u>7</u>	<u>4</u>	<u>D</u>	<u>S</u>	-	<input type="text"/>	<input type="text"/>	-	<input type="text"/>	-	<input type="text"/>	-	<input type="text"/>
1		2	2a	3	4	4a	5	6	7					

### 1 Model

**Solatube® M74 DS** Solatube M74 DS (29 in./740 mm Daylighting System)  
Open Ceiling



## Capture Zone

### 2 Domes

- DP** Polycarbonate Dome
- DPP** Polycarbonate Outer Dome + PETG Inner Dome

### 2a Dome Options (Leave blank if not desired)

- SG** Security Guard\*

\*Factory Installed

### 3 Flashings

- FC** Curb Cap  
(Curb by Others)

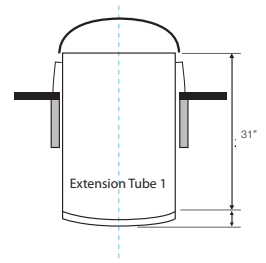


## Transfer Zone

### 4 Extension Tubes Required\*

Run measured from top of flashing to diffuser along centerline of tubing using 24" lengths. See 4a for optional 48" length.

- |   |  |
|---|--|
| <b>E1</b> One Extension Tube – Max Run = 28"    | <b>E7</b> Seven Extension Tubes – Max Run = 172"                   |
| <b>E2</b> Two Extension Tubes – Max Run = 52"   | <b>E8</b> Eight Extension Tubes – Max Run = 209"                   |
| <b>E3</b> Three Extension Tubes – Max Run = 76" | <b>E9</b> Nine Extension Tubes – Max Run = 233"                    |
| <b>E4</b> Four Extension Tubes – Max Run = 100" | <b>E10</b> Ten Extension Tubes – Max Run = 257"                    |
| <b>E5</b> Five Extension Tubes – Max Run = 124" | <b>EXX</b> Total Run Length to be Determined by Bidding Contractor |
| <b>E6</b> Six Extension Tubes – Max Run = 148"  |  |



\*At least one 24" or 48" extension tube required for diffuser

**4a Extension Tube Options** (Leave blank if not desired)

**EL** Optional 48" Extension Tube (Substitute one 48" for two 24" above)

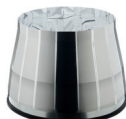
**Delivery Zone**

**5 Bottom Assembly**

**B** Base Unit



**A** Amplifier\*



\*The Amplifier mounts to the bottom extension tube, adding an additional 23.7" to the overall tube run.

**6 Diffuser Lens**

**L2** Prismatic Diffuser



**7 Measurement Standard**

**M** Metric

**I**

Imperial

**Example**

**SM74DS-O-DPP-FC-E2-B-L2-M**

Solatube® SkyVault Series M74DS-O (29 in./740 mm Daylighting System), Polycarbonate Outer Dome + PETG Inner Dome, Two Extension Tubes, Base Unit and Prismatic® Diffuser. For metric installations.